

## 1

### Start with the CANA front-end warehouse assessment

- A full scope, **physical, on-site** assessment backed by our years of industry experience. It's all about:
  - A roll up the sleeves, task-organized, tailored approach
  - Prioritizing your needs
  - Using and improving existing physical processes and recommending new ones

## 2

### Add CANA's mature analytics, using data to make your business run better

- **Taking a people and process first approach**
- Configuring and customizing a web-based automation solution for you
- Creating a scalable and tailored solution without large digital infrastructure investments

## 3

### Prepare your warehouse to integrate software built to your needs

- Providing an affordable, tailored, cloud-based software solution

#### CANA WS2 Point of Contact:

Cliff Carpenter  
 Warehouse Software & Services, Market Lead  
[ccarpenter@canallc.com](mailto:ccarpenter@canallc.com)



Out of the box solutions.  
 Superior in the box results.

**CANA WS2™ warehouse management proprietary software and services are a complete and customizable solution to your warehousing challenges.**

### How do *analytics* improve operations?



- Improve **inventory management**
- Improve **data and asset visibility**
- Improve **reporting**
- **Automate processes**

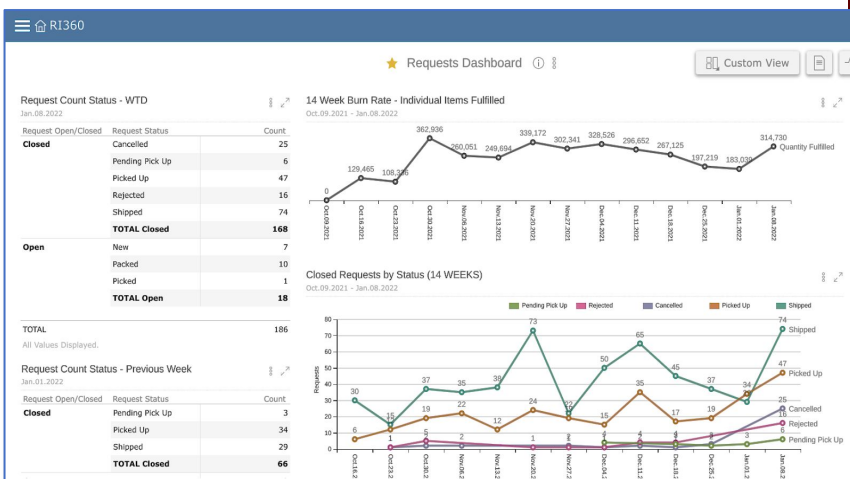


# CANA WAREHOUSE MANAGEMENT SOFTWARE (WMS)

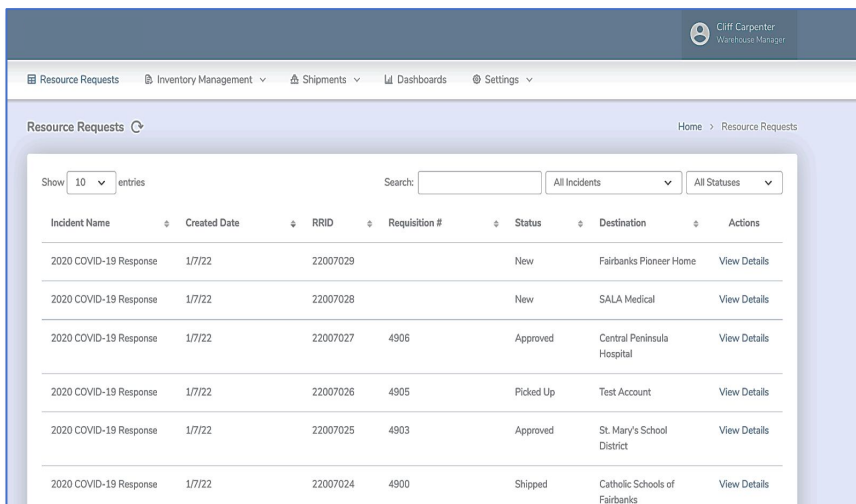


An affordable, tailored, cloud-based software solution built to your needs.

Track key volume and velocity metrics to manage your resources



Provide transparency to customers and gain stakeholder insights - answers at your fingertips



Incident Name	Created Date	RRID	Requisition #	Status	Destination	Actions
2020 COVID-19 Response	1/7/22	22007029		New	Fairbanks Pioneer Home	View Details
2020 COVID-19 Response	1/7/22	22007028		New	SALA Medical	View Details
2020 COVID-19 Response	1/7/22	22007027	4906	Approved	Central Peninsula Hospital	View Details
2020 COVID-19 Response	1/7/22	22007026	4905	Picked Up	Test Account	View Details
2020 COVID-19 Response	1/7/22	22007025	4903	Approved	St. Mary's School District	View Details
2020 COVID-19 Response	1/7/22	22007024	4900	Shipped	Catholic Schools of Fairbanks	View Details

## What are your realized gains?

- Capture and modify workflow and inventory data via web and mobile
- Improve **inventory accuracy**
- Reduce data workload
- Faster spot inventories and eliminate wall-to-wall
- Improve speed and accuracy for multi-level reporting
- “Visualize Your Data” with **customized dashboards**
- Mirror physical warehouse process paths with module-based software
- Train your employees quickly
- **No impact to ongoing operations**
- Effectively leverage **INBOUND** and **OUTBOUND** data

Contact Cliff Carpenter at [ccarpenter@canallc.com](mailto:ccarpenter@canallc.com) for a CANA WMS subscription quote.